

Permission is granted to distribute this excerpt freely

# **Shin Buddhist Service Book**



**Buddhist Education Center**  
Orange County Buddhist Church  
[www.ocbuddhist.org](http://www.ocbuddhist.org)

## Sambujō (三奉請)

(Three Respectful Callings)



Bu jo - u 1. mi da nyo ra - i  
 2. sha ka  
 3. jip pō



ni - u do - u jo u Sa - n ge - e



ra a a ku

ぶ じょう み だ にょ らい にう どう じょう さん げ らく  
 奉 請 弥 陀 如 来 入 道 場 散 華 樂  
 ぶ じょう しゃ か にょ らい にう どう じょう さん げ らく  
 奉 請 釈 迦 如 来 入 道 場 散 華 樂  
 ぶ じょう じっ ぽう にょ らい にう どう じょう さん げ らく  
 奉 請 十 方 如 来 入 道 場 散 華 樂

We respectfully welcome Amida Buddha to our temple as we scatter flowers of joy.

We respectfully welcome Śākyamuni Buddha to our temple as we scatter flowers of joy.

We respectfully welcome the Buddhas of all times and places to our temple as we scatter flowers of joy.

**Shishinrai (至心礼)**

(Bowling with Sincere Mind)

Leader

Shi shi - n ke - i i - i re e - i

All

Na - a mo sho - u - u chi - i - u 1. fu - u - u  
2. ho - o - u  
3. so - o - u

し しん けい れい な も しょう ちう ぶつ  
至 心 敬 礼 南 无 常 住 仏  
し しん けい れい な も しょう ちう ほう  
至 心 敬 礼 南 无 常 住 法  
し しん けい れい な も しょう ちう そう  
至 心 敬 礼 南 无 常 住 僧

With a sincere mind, bow reverently, and take refuge in the timeless Buddha.

With a sincere mind, bow reverently, and take refuge in the timeless Dharma.

With a sincere mind, bow reverently, and take refuge in the timeless Sangha.



## Sanbutsuge (讃仏偈)

○ ○

<i>Kō gen gi gi</i>	Fu se jō i	Jip-pō rai shō
I jin mu goku	Kai nin shō jin	Shin-netsu shō jō
Nyo ze en myō	Nyo ze sam-mai	I tō ga koku
Mu yo tō sha	Chi e i jō	Ke raku an-non
↓		
Nichi gatsu ma ni	Go sei toku butsu	Kō butsu shin myō
Shu kō en nyō	Fu gyō shi gan	Ze ga shin shō
Kai shitsu on pei	Is-sai ku ku	Hotsu gan-no hi
Yu nyaku ju moku	I sa dai an	Riki shō sho yoku
Nyo rai yō gen	Ke shi u butsu	Jip-pō se son
Chō se mu rin	Hyaku sen-noku man	Chi e mu ge
Shō gaku dai on	Mu ryō dai shō	Jō ryō shi son
Kō ru jip-pō	Shu nyo gō ja	Chi ga shin gyō
Kai mon shō jin	Ku yō is-sai	Ke ryō shin shi
Sam-mai chi e	Shi tō sho butsu	Sho ku doku chū
I toku mu ryō	Fu nyo gu dō	<u>Ga gyō shō jin</u>
Shu shō ke u	Ken shō fu gyaku	<u>Nin jū fu ke</u> ○
Jin tai zen nen	Hi nyo gō ja	<i>Na man da bu</i> ○
Sho butsu hō kai	Sho butsu se kai	Na man da bu
Gu jin jin nō	Bu fu ka ge	Na man da bu
Ku go gai tai	Mu shu setsu do	Na man da bu
Mu myō yoku nu	Kō myō shis-shō	Na man da bu
Se son yō mu	Hen shi sho koku	Na man da bu ○
Nin-no shi shi	Nyo ze shō jin	<i>Gan ni shi ku doku</i>
Jin toku mu ryō	I jin nan ryō	Byō dō se is-sai
Ku kun kō dai	Ryō ga sa butsu	Dō ho'n bo dai shin
Chi e jin myō	Koku do dai ichi	Ō jō an rak-koku
Kō myō i sō	Go shu ki myō	○ ○ ○
Shin dō dai sen	Dō jō chō zetsu	
Gan ga sa butsu	Koku nyo nai on	
Zai shō hō ō	Ni mu tō sō	
Ka do shō ji	Ga tō ai min	
Mi fu ge datsu ↑	Do datsu is-sai	

## Jūseige (重誓偈)

○ ○

*Ga gon chō se gan*  
 His-shi mu jō dō  
 Shi gan fu man zoku  
Sei fu jō shō gaku

↓

Ga o mu ryō kō  
 Fu i dai se shu  
 Fu sai sho bin gu  
Sei fu jō shō gaku

Ga shi jō butsu dō  
 Myō shō chō jip-pō  
 Ku kyō mi sho mon  
Sei fu jō shō gaku

Ri yoku jin shō nen  
 Jō e shu bon gyō  
 Shi gu mu jō dō  
 I sho ten nin shi

Jin riki en dai kō  
 Fu shō mu sai do  
 Shō jo san ku myō  
 Kō sai shu yaku nan

Kai hi chi e gen  
 Mes-shi kon mō an  
 Hei soku sho aku dō  
 Tsū datsu zen shu mon

Ko so jō man zoku  
 I yō rō jip-pō  
 Nichi gatsu shū jū ki  
 Ten kō on fu gen    ↑

I shu kai hō zō  
 Kō se ku doku hō  
 Jō o dai shu chū  
 Sep-pō shi shi ku

Ku yō is-sai butsu  
 Gu soku shu toku hon  
 Gan-ne shitsu jō man  
 Toku i san gai o

Nyo butsu mu ge chi  
 Tsū datsu mi fu shō  
 Gan ga ku e riki  
 Tō shi sai shō son

Shi gan nyak-kok-ka  
 Dai sen ō kan dō  
Ko kū sho ten nin  
Tō u chin myō ke ○

*Na man da bu* ○  
 Na man da bu  
 Na man da bu  
 Na man da bu  
 Na man da bu  
 Na man da bu ○

*Gan ni shi ku doku*  
 Byō dō se is-sai  
 Dō ho'n bo dai shin  
 Ō jō an rak-koku

○ ○ ○

## Shijūhachigan (四十八願)

○ ○

*Bus-setsu mu ryō ju kyō*

1.

Setsu ga toku butsu  
Koku u ji goku  
Ga ki chiku shō sha  
Fu shu shō gaku

2.

Setsu ga toku butsu  
Koku chū nin den  
Ju jū shi go  
Bu kyō sam-maku dō sha  
Fu shu shō gaku

3.

Setsu ga toku butsu  
Koku chū nin den  
Fu shis-shin kon jiki sha  
Fu shu shō gaku

4.

Setsu ga toku butsu  
Koku chū nin den  
Gyō shiki fu dō  
U kō shū sha  
Fu shu shō gaku

5.

Setsu ga toku butsu  
Koku chū nin den  
Fu shiki shuku myō  
Ge shi fu chi  
Hyaku sen-noku  
Na yu ta  
Sho kō ji sha  
Fu shu shō gaku

6.

Setsu ga toku butsu  
Koku chū nin den  
Fu toku ten gen

Ge shi fu ken

Hyaku sen-noku

Na yu ta

Sho buk-koku sha

Fu shu shō gaku

7.

Setsu ga toku butsu

Koku chū nin den

Fu toku ten ni

Ge shi mon

Hyaku sen-noku

Na yu ta

Sho bus-sho setsu

Fu shitsu ju ji sha

Fu shu shō gaku

8.

Setsu ga toku butsu

Koku chū nin den

Fu toku ken ta shin chi

Ge shi fu chi

Hyaku sen-noku

Na yu ta

Sho buk-koku chū

Shu jō shin nen sha

Fu shu shō gaku

9.

Setsu ga toku butsu

Koku chū nin den

Fu toku jin soku

O ichi nen kyō

Ge shi fu nō

Chō ka hyaku sen-noku

Na yu ta

Sho buk-koku sha

Fu shu shō gaku

10.  
 Setsu ga toku butsu  
 Koku chū nin den  
 Nyak-ki sō nen  
 Ton ge shin sha  
 Fu shu shō gaku

11.  
 Setsu ga toku butsu  
 Koku chū nin den  
 Fu jū jō ju  
 His-shi metsu do sha  
 Fu shu shō gaku

12.  
 Setsu ga toku butsu  
 Kō myō u nō gen ryō  
 Ge shi fu shō  
 Hyaku sen-noku  
 Na yu ta  
 Sho buk-koku sha  
 Fu shu shō gaku

13.  
 Setsu ga toku butsu  
 Ju myō u nō gen ryō  
 Ge shi hyaku sen-noku  
 Na yu ta kō sha  
 Fu shu shō gaku

14.  
 Setsu ga toku butsu  
 Koku chū shō mon  
 U nō ke ryō  
 Ge shi san zen  
 Dai sen se kai  
 Shō mon en gaku  
 O hyaku sen gō  
 Shitsu gu ke kyō  
 Chi go shu sha  
 Fu shu shō gaku

15.  
 Setsu ga toku butsu  
 Koku chū nin den  
 Ju myō mu nō gen ryō  
 Jo go hon gan  
 Shu tan ji zai  
 Nyaku fu ni sha  
 Fu shu shō gaku

16.  
 Setsu ga toku butsu  
 Koku chū nin den  
 Nai shi mon-nu  
 Fu zen myō sha  
 Fu shu shō gaku

17.  
 Setsu ga toku butsu  
 Jip-pō se kai  
 Mu ryō sho butsu  
 Fu shis-shi sha  
 Shō ga myō sha  
 Fu shu shō gaku

18.  
 Setsu ga toku butsu  
 Jip-pō shu jō  
 Shi shin shin gyō  
 Yoku shō ga koku  
 Nai shi jū nen  
 Nyaku fu shō ja  
 Fu shu shō gaku  
 Yui jo go gyaku  
 Hi hō shō bō

19.  
 Setsu ga toku butsu  
 Jip-pō shu jō  
 Hotsu bo dai shin  
 Shu sho ku doku  
 Shi shin hotsu gan



Yoku shō ga koku  
 Rin ju jū ji  
 Ke ryō fu yo  
 Dai shu i nyō  
 Gen go nin zen ja  
 Fu shu shō gaku

20.

Setsu ga toku butsu  
 Jip-pō shu jō  
 Mon ga myō gō  
 Ke nen ga koku  
 Jiki sho toku hon  
 Shi shin e kō  
 Yoku shō ga koku  
 Fu ka sui sha  
Fu shu shō gaku ○

*Na man da bu* ○  
 Na man da bu  
 Na man da bu  
 Na man da bu  
 Na man da bu  
 Na man da bu ○

*Gan ni shi ku doku*  
 Byō dō se is-sai  
 Dō ho 'n bo dai shin  
 Ō jō an rak-koku

○ ○ ○

## Amida Sutra (阿弥陀經)

○ ○

<i>Bus-setsu a mi da kyō</i>	Ni ji butsu gō
Nyo ze ga mon	Chō rō sha ri hotsu
Ichi ji butsu zai	Ju ze sai hō
Sha e koku	Ka jū man-noku butsu do
Gi ju kik-ko doku on	U se kai
Yo dai bi ku shu	Myō watsu goku raku
Sen ni hyaku go jū nin ku	Go do u butsu
Kai ze dai a ra kan	Gō a mi da
Shu sho chi shiki	Kon gen zai sep-pō
Chō rō sha ri hotsu	—
Ma ka mok-ken ren	Sha ri hotsu
Ma ka ka shō	Hi do ga ko
Ma ka ka sen nen	Myō i goku raku
Ma ka ku chi ra	Go koku shu jō
Ri ha ta	Mu u shu ku
Shu ri han da ga	Tan ju sho raku
Nan da	Ko myō goku raku
A nan da	—
Ra go ra	U sha ri hotsu
Kyō bon ha dai	Goku rak-koku do
Bin zu ru ha ra da	Shichi jū ran jun
Ka ru da i	Shichi jū ra mō
Ma ka kō hin na	Shichi jū gō ju
Ha ku ra	Kai ze shi hō
A nu ru da	Shu sō i nyō
Nyo ze tō	Ze ko hi koku
Sho dai de shi	Myō watsu goku raku
Byō sho bo satsu ma ka satsu	—
Mon ju shi ri hō ō ji	U sha ri hotsu
A it-ta bo satsu	Goku rak-koku do
Ken da ka dai bo satsu	U ship-pō chi
Jō shō jin bo satsu	Hak-ku doku sui
Yo nyo ze tō	Jū man go chū
Sho dai bo satsu	Chi tai jun-ni
Gyū shaku dai kan in tō	Kon sha fu ji
Mu ryō sho ten	Shi hen kai dō
Dai shu ku	Kon gon ru ri

Ha ri gō jō  
 Jō u rō kaku  
 Yaku i kon gon ru ri  
 Ha ri sha ko  
 Shaku shu me nō  
 Ni gon jiki shi  
 Chi chū ren ge  
 Dai nyo sha rin  
 Shō shiki shō kō  
 Ō shiki ō kō  
 Shaku shiki shak-kō  
 Byaku shiki byak-kō  
 Mi myō kō ketsu  
 Sha ri hotsu  
 Goku rak-koku do  
 Jō ju nyo ze  
 Ku doku shō gon

—

U sha ri hotsu  
 Hi buk-koku do  
 Jō sa ten gaku  
 Ō gon i ji  
 Chū ya roku ji  
 Ni u man da ra ke  
 Go koku shu jō  
 Jō i shō tan  
 Kaku i e koku  
 Jō shu myō ke  
 Ku yō ta hō  
 Jū man-noku butsu  
 Soku i jiki ji  
 Gen tō hon goku  
 Bon jiki kyō gyō  
 Sha ri hotsu  
 Goku rak-koku do  
 Jō ju nyo ze  
 Ku doku shō gon

—

Bu shi sha ri hotsu  
 Hi koku jō u

Shu ju ki myō  
 Zas-shiki shi chō  
 Byak-kō ku jaku  
 Ō mu sha ri  
 Ka ryō bin ga  
 Gu myō shi chō  
 Ze sho shu chō  
 Chū ya roku ji  
 Sui wa ge on  
 Go on en chō  
 Go kon go riki  
 Shichi bo dai bun  
 Has-shō dō bun  
 Nyo ze tō hō  
 Go do shu jō  
 Mon ze on-ni  
 Kai shitsu nen butsu  
 Nen pō nen sō  
 Sha ri hotsu  
 Nyo motsu i shi chō  
 Jitsu ze zai hō sho shō  
 Sho i sha ga  
 Hi buk-koku do  
 Mu sam-maku shu  
 Sha ri hotsu  
 Go buk-koku do  
 Shō mu sam-maku dō shi myō  
 Ga kyō u jitsu  
 Ze sho shu chō  
 Kai ze a mi da butsu  
 Yoku ryō hō on sen ru  
 Hen ge sho sa  
 Sha ri hotsu  
 Hi buk-koku do  
 Mi fu sui dō  
 Sho hō gō ju  
 Gyū hō ra mō  
 Sui mi myō on  
 Hi nyo hyaku sen ju gaku  
 Dō ji ku sa

Mon ze on sha  
 Kai ji nen jō  
 Nen butsu nen pō  
 Nen sō shi shin  
 Sha ri hotsu  
 Go buk-koku do  
Jō ju nyo ze  
Kudoku shō gon

○ ○ ○

*Sha ri hotsu*  
 O nyo i un ga  
 Hi butsu ga ko  
 Gō a mi da  
 Sha ri hotsu  
 Hi butsu kō myō mu ryō  
 Shō jip-pō koku  
 Mu sho shō ge  
 Ze ko gō i a mi da  
 U sha ri hotsu  
 Hi butsu ju myō  
 Gyū go nin min  
 Mu ryō mu hen  
 A sō gi kō  
 Ko myō a mi da  
 Sha ri hotsu  
 A mi da butsu  
 Jō butsu i rai  
 O kon jik-kō  
 U sha ri hotsu  
 Hi butsu u mu ryō mu hen  
 Shō mon de shi  
 Kai a ra kan  
 Hi ze san ju  
 Shi sho nō chi  
 Sho bo sas-shu  
 Yaku bu nyo ze  
 Sha ri hotsu  
 Hi buk-koku do  
 Jō ju nyo ze  
 Ku doku shō gon

U sha ri hotsu  
 Goku rak-koku do  
 Shu jō shō ja  
 Kai ze a bi bac-chi  
 Go chū ta u  
 Is-shō fu sho  
 Go shu jin ta  
 Hi ze san ju  
 Sho nō chi shi  
 Tan ka i mu ryō mu hen  
 A sō gi kō setsu  
 Sha ri hotsu  
 Shu jō mon sha  
 Ō tō hotsu gan  
 Gan shō hi koku  
 Sho i sha ga  
 Toku yo nyo ze  
 Sho jō zen nin  
 Ku e is-sho  
 Sha ri hotsu  
 Fu ka i shō zen gon  
 Fuku toku in-nen  
 Toku shō hi koku  
 —  
 Sha ri hotsu  
 Nyaku u zen nan shi  
 Zen nyo nin  
 Mon setsu a mi da butsu  
 Shū ji myō gō  
 Nyaku ichi nichī  
 Nyaku ni nichī  
 Nyaku san nichī  
 Nyaku shi nichī  
 Nyaku go nichī  
 Nyaku roku nichī  
 Nyaku shichi nichī  
 Is-shin fu ran  
 Go nin rin myō ju ji  
 A mi da butsu  
 Yo sho shō ju

Gen zai go zen  
 Ze nin ju ji  
 Shin pu ten dō  
 Soku toku ō jō  
 A mi da butsu  
 Goku rak-koku do  
 Sha ri hotsu  
 Ga ken ze ri  
 Ko ses-shi gon  
 Nyaku u shu jō  
 Mon ze ses-sha  
 Ō tō hotsu gan  
 Shō hi koku do  
 —  
 Sha ri hotsu  
 Nyo ga kon ja  
 San dan a mi da butsu  
 Fu ka shi gi ku doku  
 Tō bō yaku u  
 A shuku bi butsu  
 Shu mi sō butsu  
 Dai shu mi butsu  
 Shu mi kō butsu  
 Myō on butsu  
 Nyo ze tō  
 Gō ga sha shu sho butsu  
 Kaku o go koku  
 Sui kō jō zes-sō  
 Hen pu san zen  
 Dai sen se kai  
 Setsu jō jitsu gon  
 Nyo tō shu jō  
 Tō shin ze shō san  
 Fu ka shi gi ku doku  
 Is-sai sho butsu  
 Sho go nen gyō  
 —  
 Sha ri hotsu  
 Nan bō se kai  
 U nichī gat-tō butsu

Myō mon kō butsu  
 Dai en ken butsu  
 Shu mi tō butsu  
 Mu ryō shō jin butsu  
 Nyo ze tō  
 Gō ga sha shu sho butsu  
 Kaku o go koku  
 Sui kō jō zes-sō  
 Hen pu san zen  
 Dai sen se kai  
 Setsu jō jitsu gon  
 Nyo tō shu jō  
 Tō shin ze shō san  
 Fu ka shi gi ku doku  
 Is-sai sho butsu  
 Sho go nen gyō  
 —  
 Sha ri hotsu  
 Sai hō se kai  
 U mu ryō ju butsu  
 Mu ryō sō butsu  
 Mu ryō dō butsu  
 Dai kō butsu  
 Dai myō butsu  
 Hō sō butsu  
 Jō kō butsu  
 Nyo ze tō  
 Gō ga sha shu sho butsu  
 Kaku o go koku  
 Sui kō jō zes-sō  
 Hen pu san zen  
 Dai sen se kai  
 Setsu jō jitsu gon  
 Nyo tō shu jō  
 Tō shin ze shō san  
 Fu ka shi gi ku doku  
 Is-sai sho butsu  
 Sho go nen gyō  
 —  
 Sha ri hotsu

Hop-pō se kai	Sha ri hotsu
U en ken butsu	Jō hō se kai
Sai shō on butsu	U bon-non butsu
Nan sho butsu	Shuku ō butsu
Nis-shō butsu	Kō jō butsu
Mō myō butsu	Kō kō butsu
Nyo ze tō	Dai en ken butsu
Gō ga sha shu sho butsu	Zas-shiki hō ke gon shin butsu
Kaku o go koku	Sha ra ju ō butsu
Sui kō jō zes-sō	Hō ke toku butsu
Hen pu san zen	Ken is-sai gi butsu
Dai sen se kai	Nyo shu mi sen butsu
Setsu jō jitsu gon	Nyo ze tō
Nyo tō shu jō	Gō ga sha shu sho butsu
Tō shin ze shō san	Kaku o go koku
Fu ka shi gi ku doku	Sui kō jō zes-sō
Is-sai sho butsu	Hen pu san zen
Sho go nen gyō	Dai sen se kai
—	Setsu jō jitsu gon
Sha ri hotsu	Nyo tō shu jō
Ge hō se kai	Tō shin ze shō san
U shi shi butsu	Fu ka shi gi ku doku
Myō mon butsu	Is-sai sho butsu
Myō kō butsu	Sho go nen gyō
Datsu ma butsu	—
Hō dō butsu	Sha ri hotsu
Ji hō butsu	O nyo i un ga
Nyo ze tō	Ga ko myō i
Gō ga sha shu sho butsu	Is-sai sho butsu
Kaku o go koku	Sho go nen gyō
Sui kō jō zes-sō	Sha ri hotsu
Hen pu san zen	Nyaku u zen nan shi
Dai sen se kai	Zen nyo nin
Setsu jō jitsu gon	Mon ze sho bus-sho setsu myō
Nyo tō shu jō	Gyū kyō myō sha
Tō shin ze shō san	Ze sho zen nan shi
Fu ka shi gi ku doku	Zen nyo nin
Is-sai sho butsu	Kai i is-sai sho butsu
Sho go nen gyō	Gu sho go nen
—	Kai toku fu tai ten

O a noku ta ra	Kō joku ken joku
Sam-myaku san bo dai	Bon nō joku
Ze ko sha ri hotsu	Shu jō joku
Nyo tō kai tō	Myō joku chū
Shin ju ga go	Toku a noku ta ra
Gis-sho bus-sho setsu	Sam-myaku san bo dai
Sha ri hotsu	I sho shu jō
Nyaku u nin	Setsu ze is-sai se ken
I hotsu gan	Nan shin shi hō
Kon potsu gan	Sha ri hotsu
Tō hotsu gan	Tō chi ga o
Yoku shō a mi da buk-koku sha	Go joku aku se
Ze sho nin tō	Gyō shi nan ji
Kai toku fu tai ten	Toku a noku ta ra
O a noku ta ra	Sam-myaku san bo dai
Sam-myaku san bo dai	I is-sai se ken
O hi koku do	Ses-shi nan shin shi hō
Nyaku i shō	Ze i jin nan
Nyaku kon jō	—
Nyaku tō shō	Bus-se-shi kyō i
Ze ko sha ri hotsu	Sha ri hotsu
Sho zen nan shi	Gis-sho bi ku
Zen nyo nin	Is-sai se ken
Nyaku u shin ja	Ten nin ashu ra tō
Ō tō hotsu gan	<u>Mon bus-sho setsu</u>
Shō hi koku do	<u>Kan gi shin ju</u>
—	<u>Sarai niko</u>
Sha ri hotsu	<u>Bus-setsu a mi da kyō</u> ○
Nyo ga kon ja	—
Shō san sho butsu	<i>Na man da bu</i> ○
Fu ka shi gi ku doku	Na man da bu
Hi sho but-tō	Na man da bu
Yaku shō setsu ga	Na man da bu
Fu ka shi gi ku doku	Na man da bu
Ni sa ze gon	Na man da bu ○
Shaka muni butsu	—
Nō i jin nan	<i>Gan ni shi ku doku</i>
Ke u shi ji	Byō dō se is-sai
Nō o sha ba koku do	Dō ho'n bo dai shin
Go joku aku se	Ō jō an rak-koku ○ ○ ○


# Shōshinge (正信偈)

Sō-fu (草譜)

° ° Leader All




Ki myo - u mu ryo - u ju nyo ra - i Na mo fu ka shi gi kō



Hō zō bo sa-tsu in ni ji Zai se ji zai ō bus-sho

2.



To ken sho bu-tsu jō do in Ko-ku do nin den shi zen maku



Kon ryū mu jō shu shō gan Chō ho-tsu ke u dai gu zēi

3.  
Go kō shi yui shi shō ju  
Jū sei myō shō mon jip-pō  
Fu hō mu ryō mu hen kō  
Mu ge mu tai kō en nō

4.  
Shō jō kan gi chi e kō  
Fu dan nan ji mu shō kō  
Chō nichī gak-kō shō jin setsu  
Is-sai gun jō mu kō shō

5.  
Hon gan myō gō shō jō gō  
Shi shin shin gyō gan ni in  
Jō tō gaku shō dai ne han  
His-shi metsu do gan jō ju

6.  
Nyo rai sho-i kō shus-se  
Yui setsu mi da hon gan kai  
Go joku aku ji gun jō kai  
Ō shin nyo rai nyo jitsu gon

7.  
Nō hotsu ichi nen ki ai shin  
Fu dan bon nō toku ne han  
Bon jō gyaku hō sai e nyū  
Nyo shu shi nyū kai ichi mi

8.  
Ses-shu shin kō jō shō go  
I nō sui ha mu myō an  
Ton nai shin zō shi un mu  
Jō-fu shin jitsu shin jin ten



9.

Hi nyo nik-kō fu un mu  
 Un mu shi ge myō-mu an  
 Gyaku shin ken kyō dai kyō ki  
 Soku ō chō zetsu go aku shu

10.

Is-sai zen maku bon bu nin  
 Mon shin nyo rai gu zeī gan  
 Butsu gon kō dai shō ge sha  
 Ze nin myō fun da ri ke—

11.

—mi da butsu hon gan nen butsu  
 Ja ken kyō man aku shu jō  
 Shin gyō ju ji jin ni nan  
 Nan chū shi nan mu ka shi

12.

In do sai ten shi ron ge  
Chū ka jichi iki shi kō sō  
 Ken dai shō kō se shō i  
 Myō nyo rai hon zeī ō ki

13.

*Shaka* nyo rai ryō ga sen  
I shu gō myō nan ten jiku  
*Ryūju dai*-ji shut-to se  
 Shitsu nō zai ha u mu ken

14.

Sen zetsu dai jō mu jō hō  
 Shō kan gi ji shō an raku  
 Ken ji nan gyō roku ro ku  
 Shin gyō i gyō shi dō raku

15.

Oku nen mi da butsu hon gan  
Ji nen soku ji nyū hitsu jō  
 Yui nō jō shō nyo rai gō  
 Ō hō dai-hi gu zeī on

16.

*Tenjin* bo satsu zō ron setsu  
 Ki myō mu ge kō nyo rai  
 E shu ta ra ken shin jitsu  
 Kō sen ō chō dai sei gan

17.

Kō-yu hon gan riki e kō  
 I do gun jō shō is-shin  
 Ki nyū ku doku dai hō kai  
 Hitsu gyaku nyū dai e shu shu

18.

Toku shi ren ge zō se kai  
 Soku shō shin nyo hos-shō jin  
 Yu bon nō rin gen jin zū  
 Nyū shō ji on ji ō ge

19.

Hon shi *Donran* ryō ten shi  
 Jō kō ran sho bo satsu rai  
 San zō ru shi ju jō kyō  
 Bon jō sen gyō ki raku hō

20.

Tenjin bo satsu ron chū ge  
 Hō do in ga ken sei gan  
 Ō gen ne kō yu ta riki  
 Shō jō shi in yui shin jin

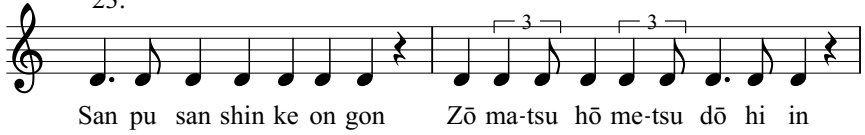
21.

Waku zen bon bu shin jin potsu  
Shō-chi shō-ji soku ne han  
 His-shi mu ryō kō myō do  
Sho-u shu jō kai fu ke

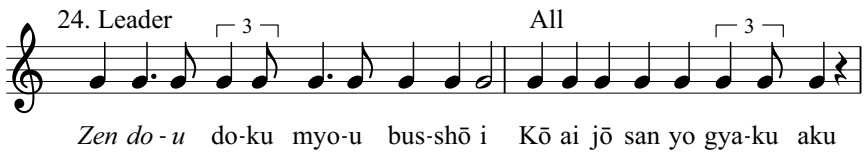
22.

*Dōshaku* kes-shō dō nan shō  
 Yui myō jō do ka tsū nyū  
 Man zen ji riki hen gon shu  
 En man toku gō kan sen shō

23.



24. Leader



25.



26.



27.



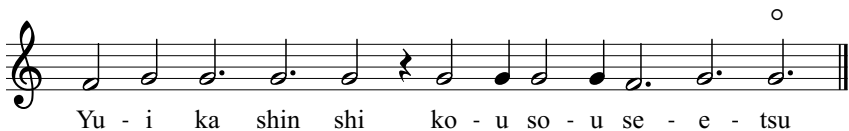
28.



29.



30.



## Nembutsu Wasan (念仏和讃)

Verses in Praise of Amida Buddha

Leader All

Na - mo a - mi - da - a - an bu      Na - mo a - mi - da - a - an bu

Na - mo a - mi - da - n bu      Na - mo a - mi - da - n bu

Na a - mo a - mi - da - a - an bu      Na a - mo a - mi - da an bu      Na

Leader 1

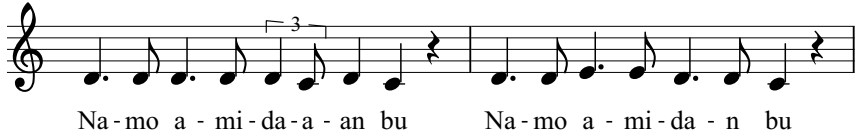
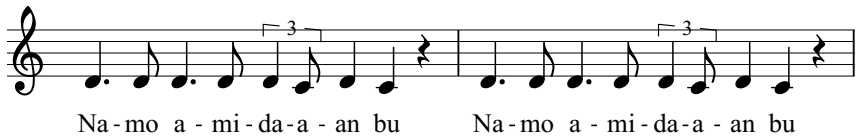
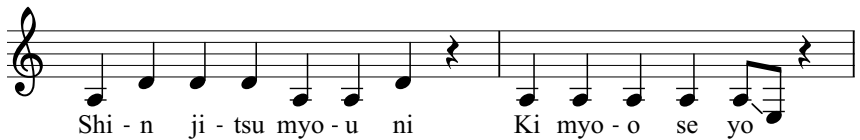
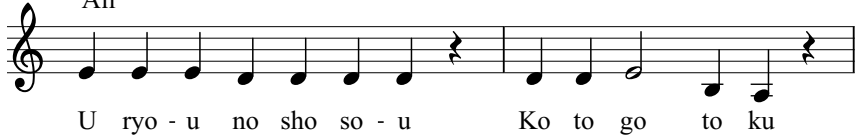
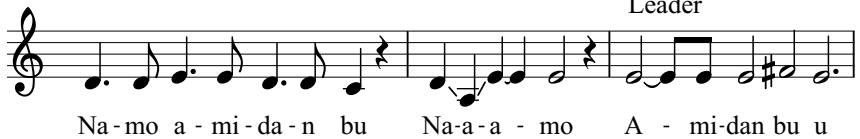
Mi da jo - u bu - tsu no      Ko no ka ta wa - a - a

All

I ma ni - i jik - ko - u o - o      He ta ma e ri

Ho - os - shi - n no ko - u ri - i - n      Ki wa mo na ku

Se no mo - u myo - u o      Te ra su na ri

**Leader 2****All****Leader**

All

Na - mo a - mi - da - n bu      Na - mo a - mi - da - n bu

Na - mo a - mi - da - an bu    u    Na - mo a - mi - da - n bu

Na - mo a - mi - da - n bu      Na - mo a - mi - da - a - an bu    Na

**Leader 3**

Ge da - tsu no ko - u ri - n      Ki wa mo na shi \_\_\_\_\_

All

Ko u so - ku ka mu ru - u      Mo no wa mi na

U - u mu o ha na ru to      No be ta mo o      Byo - u do - u ka - ku ni

Ki myo - o se yo      Na - mo a - mi - da - n bu

Na - mo a - mi - da - an bu    u    Na - mo a - mi - da - n bu

Na - mo a - mi - da - a - an bu Na

## Leader 4

Ko - u u - n mu ge Nyo - o ko - o ku

## All

Is sa - i no u ge ni - i Sa wa ri na shi

Ko - u ta - ku ka mu ra nu Mo no zo na ki Na - n ji - i gi o

Ki myo - o se yo Na - mo a - mi - da - n bu

Na - mo a - mi - da - n bu Na - mo a - mi - da - an bu u

## Leader

## All

Na - mo a - mi - da - a - an bu Na - mo a - mi - da - a - an bu

Na - mo a - mi - da - a - an bu Na a - mo a - mi - da an bu



Na - mo a - mi - da - a - an bu      Na - mo a - mi - da - a - an bu



Na    a - mo a - mi - da    an bu      Na

**Leader 5**



Sho - u jo - u ko - o - o - u myo - u      Na ra bi na shi \_\_\_\_\_

All



Gu shi - i ko - u no      Yu e na re ba      I - is - sa - i no gok - ke mo



No zo ko ri nu      Hik - kyo - u e - e o      Ki myo - o se yo



Na - mo a - mi - da - a - an bu      Na - mo a - mi - da - a - an bu



Na - mo a - mi - da - a - an bu      Na a - mo a - mi - da an bu      Na

**Leader 6**



Bu u ko - u se - u e - u      Sa - i da i i - chi





Ko - u e - n no - u but - to Na zu ke ta ri



Sa - n zu no ko - ku a - n Hi ra ku na ri



Da - i o - u gu - u o Ki myo - o se yo



Gan ni shi ku do - o - o ku - u Byo - u do - u se i - is - sa - i



Do - u ho - tsu bo da - i shin O - u jo - u a - n ra - ak - ko